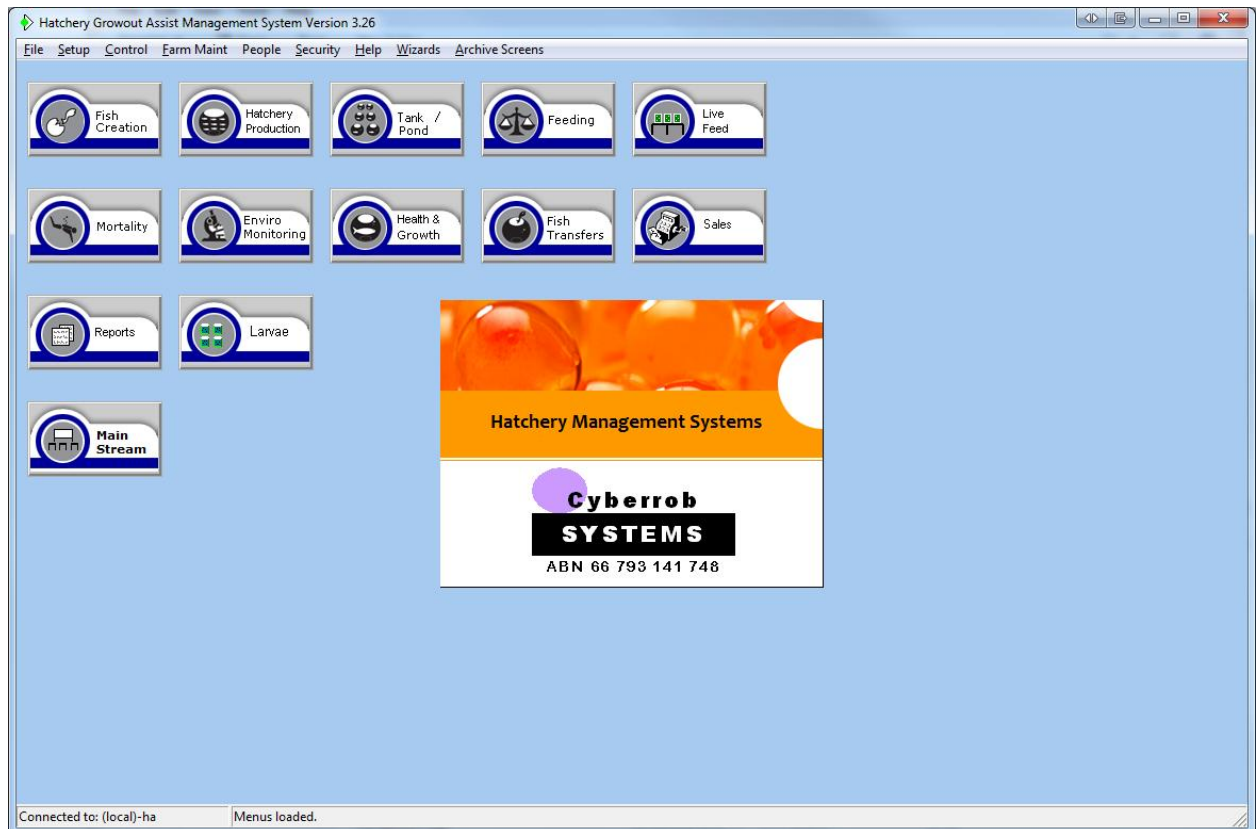


'Hatchery Management System caters for all types of Fish and Crustaceans in a Hatchery with or without Growout facilities that require a total solution for the storing of operational data to assist in full traceability in support of Stock Control, Stock Monitoring, Environment Monitoring, Feed Ordering, Growth Forecasting, Harvesting, Customer Sales, Farm Maintenance and many other features and functions



The software comprises the following modules:

Stock

The module accepts data input for

- Year Class and Fish Id Assignments and adjustments
- Multi species
- Feeding schedules
- Mortality recording
- Site Management for Pond or Tank intakes and assignments
- Stock Control
- Spawning and fertilization
- Fish Movements including grading and swim transfers
- Fish Health

- Environmental monitoring
- Fish growth monitoring
- Brood stock and Purchase Intakes
- Parent and Children Genealogy where the fish are split into several groups for grading etc.
- Feed Traceability such as Production Run No's used by the Feeding Companies.
- Live Feed Information such as Algae, Artemia and Rotifers Production

Harvest

The module accepts data input for

- Harvest by Fish Id group
- Harvest Processing
- Processors

Site Layout

- Accepts maps and shows monitoring points
- Tank/Pond, Bank and Incubator details

People

- Customer, contacts and staff records

Sales

The module accepts data input for

- Customers
- Placement of Customer Orders
- Customer Pricing
- Packing and Shipping

Ordering/Deliveries

The software includes the following:

Reports/forms/graphs:

- Brood stock intake.
- Fish ID's stock control.
- Mortalities.
- Feeding schedule, consumption analysis, and stock take and usage rates.
- Growth/feed rate mortality. Predictions.
- Growth/feed consumption.
- Grading and swim thru.
- Fish Health.
- Stock monitoring.
- Environmental monitoring.
- Tank/pond assignment control.

The **Benefits** of '**Hatchery Management System**' include:

- Substantial Labour Costs Savings
- Reduced Fixed Operational Costs
- Miminise Training Effort and Cost
- Help is Always On Hand
- Timely Information

The module accepts data input for

- Placement of orders to Suppliers
- Supplier / Order Locations
- Carriers/Deliveries

Budget

The module accepts data input for

- Farm costs
- Stocking density predictions

Maintenance

The module accepts data input for

- Maintenance Schedules and Requests
- Plant Recording
- Operational costing

- Fish movements.
- Site layout.
- Inventory management.
- Product traceability.
- Orders and deliveries.
- Customers and suppliers.

Wizard Programs:

- Tank Id Creator
- Monitoring Environment Rapid Data Entry
- Fish Id Creator
- Fish Movement Rapid Data Entry

- Easy Report Production – All at the Click of a Button
- One Stop Environmental Reporting
- Focus on the Business and Not on the Technology
- Open Access to All Users

- Clear Accountability and Time Management
- Traceability for Every Step in the Process

The **Features** of '**Hatchery Management System**' are:

- One System for all Data
- User Customisable
- Provides Up to the Minute Reporting

- Fast Data Entry
- You Decide What Is Reported
- Customised Work Flow
- Conversion and Set Up is Easy
- User Access Defined
- Windows Based Technology
- Easy interface capability with weight scales, monitoring equipment and accounting packages.

Pricing

Pricing is \$100 Australian Dollars per month subscription.

Payment is via our website www.cyberrob.net

You also get free upgrades, bug fix release patches, and you become part of our networked development partnership program where you can ask for additional changes to the system to suit your business.

Our system is quite unique in its ability to adapt to your business using special object programming technology

Any additional changes is chargeable to you but at very competitive rates.