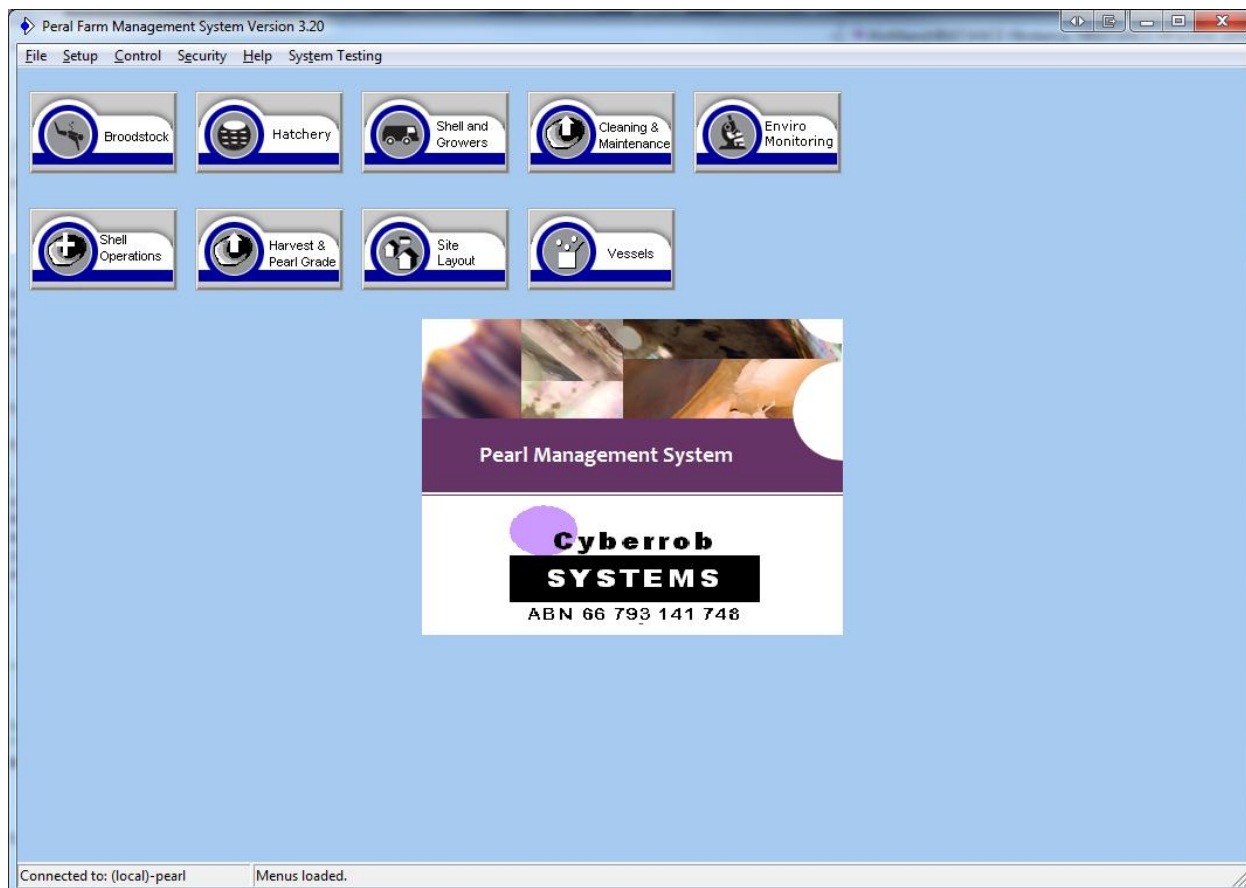


Pearl Management System' caters for Pearl Farmers who want to control stock management of their pearl oysters.



The software comprises the following modules:

Broodstock

The module accepts data input for

- Broodstock Intake
- Broodstock Line Assignments
- Broodstock Tank Assignments
- Wild Intake

Hatchery

The module accepts data input for

- Spawning and Fertilisation
- Hatchery Details

Intake / Growout

- Hatchery Spat Intake
- Spat Intake Movements
- Line to Line Movements

- Line to Tank Movements
- Tank to Line Movements
- Shell Code Id Creation
- Shell Type Id Creation
- Tag Id Creation
- Spat Dedensing
- Spat in Panels to Line Movements
- Spat in Collectors to Line Movements
- Spat Schedule
-

Cleaning and Maintenance

- Shell Cleaning
- Shell Clean Movements

- Line Maintenance
- Vessel Maintenance
- Maintenance Request

Environment Monitoring

- Water Monitoring
- Vessel Traffic

Shell Operations

- Shell Operations
- Shell Operations Line Movements
- X-Ray Details
- X-Ray Line Movements

Harvest and Pearl Grading

The software includes the following:

Reports/forms/graphs:

- Broodstock Intake Report
- Hatchery Survival Report
- Farm Summary Report
- Shell Stock Summary Report
- Spat Dedense Report
- Spat Intake Report
- Spat Schedule Report
- Shell Cleaning Report
- Line Maintenance Report
- Work Schedule Report
- Water Monitoring Report

The **Benefits** of 'Pearl Assist' include:

- Substantial Labour Costs Savings
- Reduced Fixed Operational Costs
- Minimise Training Effort and Cost
- Help is Always On Hand
- Timely Information
- Easy Report Production – All at the Click of a Button
- One Stop Environmental Reporting
- Focus on the Business and Not on the Technology
- Open Access to All Users

The module accepts data input for

- Pearl Grading
- Harvest Details

Site Layout

The module accepts data input for

- Site Location Details
- Line Nos
- Tank Groups
- Tank Ids

Misc Items

The module accepts data input for

- Asset Plant Recording
- Loan Register

- Vessel Traffic Report
- Shell Operations Report
- X-Ray Report
- Harvest Report
- Pearl Grading Report
- Loan Register Report

Wizard Programs:

- Line No Wizard
- Tank No Wizard
- Create User Rights Wizard

- Clear Accountability and Time Management
- Traceability for Every Step in the Process

The **Features** of 'Pearl Assist' are:

- One System for all Data
- User Customisable
- Provides Up to the Minute Reporting
- Fast Data Entry
- You Decide What Is Reported

- Customised Work Flow
- Conversion and Set Up is Easy
- User Access Defined
- Windows Based Technology
- Easy interface capability with weight scales, monitoring equipment and accounting packages.

Pricing

Pricing is \$100 Australian Dollars per month subscription.

Payment is via our website www.cyberrob.net

You also get free upgrades, bug fix release patches, and you become part of our networked development partnership program where you can ask for additional changes to the system to suit your business.

Our system is quite unique in its ability to adapt to your business using special object programming technology

Any additional changes is chargeable to you but at very competitive rates.